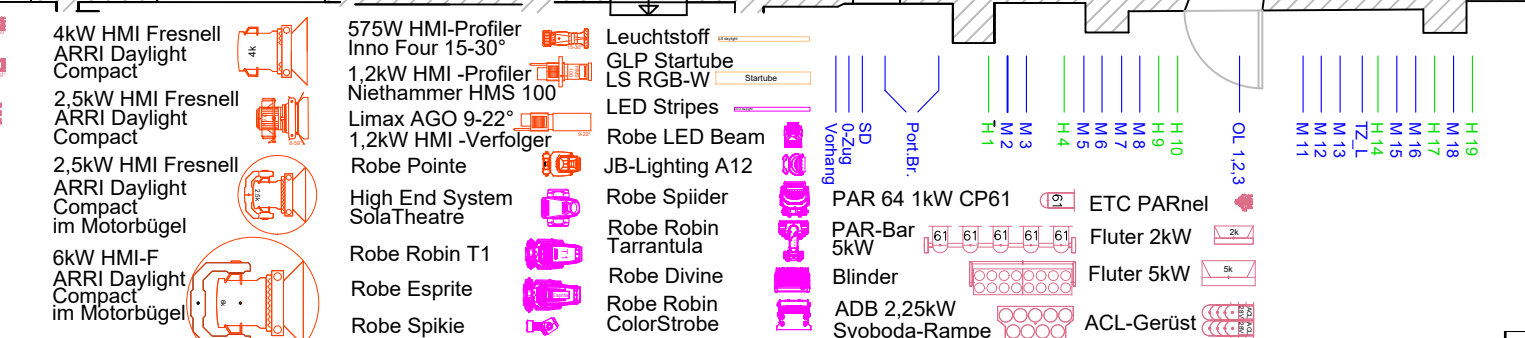


- Legende**
- Lighting Innovation 1,2kW NV
 - Reiche + Vogel 1kW NV 24V
 - Robert Juliat PC 2,5kW 329 HPB
 - QuartzColor 5kW Fresnell Pollux
 - QuartzColor 5kW Fresnell Pollux mit Farbwechsler
 - ETC Profiler 15-30° Source 4 Lustr 2
 - ETC Profiler 25-50° Source 4 Lustr 2
 - ETC Profiler 25-50° Source 4 HD
 - ETC Fresnel Source 4 Lustr 2
 - ETC Profiler 36° Source 4 Lustr 3
 - ETC Profiler 25-50° Source 4 Lustr 3
 - ETC Profiler 15-30° Source 4 Lustr 3
 - ETC 750W Profiler Source Four 15-30°
 - ETC 750W Profiler Source Four 25-50°
 - ADB 800W-Profiler Warp 22-50°
 - 1,2kW-Profiler Niethammer HPZ 115 15-38°
 - ETC 750W Profiler Source Four 15-30° 115 Volt
 - ETC 750W Profiler Source Four 19°
 - 4kW HMI Fresnell ARRI Daylight Compact
 - 2,5kW HMI Fresnell ARRI Daylight Compact
 - 2,5kW HMI Fresnell ARRI Daylight Compact im Motorbügel
 - 6kW HMI-F ARRI Daylight Compact im Motorbügel
 - 575W HMI-Profiler Inno Four 15-30°
 - 1,2kW HMI -Profiler Niethammer HMS 100
 - Limax AGO 9-22°
 - 1,2kW HMI -Verfolger
 - Robe Pointe
 - High End System SolaTheatre
 - Robe Robin T1
 - Robe Esprite
 - Robe Spikie
 - Leuchtstoff
 - GLP Startube LS RGB-W
 - LED Stripes
 - Robe LED Beam
 - JB-Lighting A12
 - Robe Spider
 - Robe Robin Tarrantula
 - Robe Divine
 - Robe Robin ColorStrobe
 - PAR 64 1kW CP61
 - PAR-Bar 5kW
 - Blinder
 - ADB 2,25kW Svoboda-Rampe
 - ETC PARnel
 - Fluter 2kW
 - Fluter 5kW
 - ACL-Gerüst



BELEUCHTUNGSPLAN
DT_04_2024_ATT
 Erstellt: 09.04.2024 C_GLOTH Maßstab: 1:100 Blatt 1

Deutsches Theater Berlin
 Schumannstraße 13a, 10117 Berlin